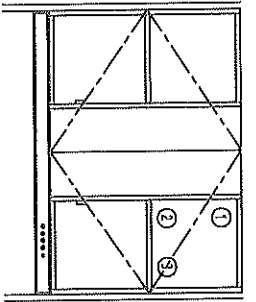
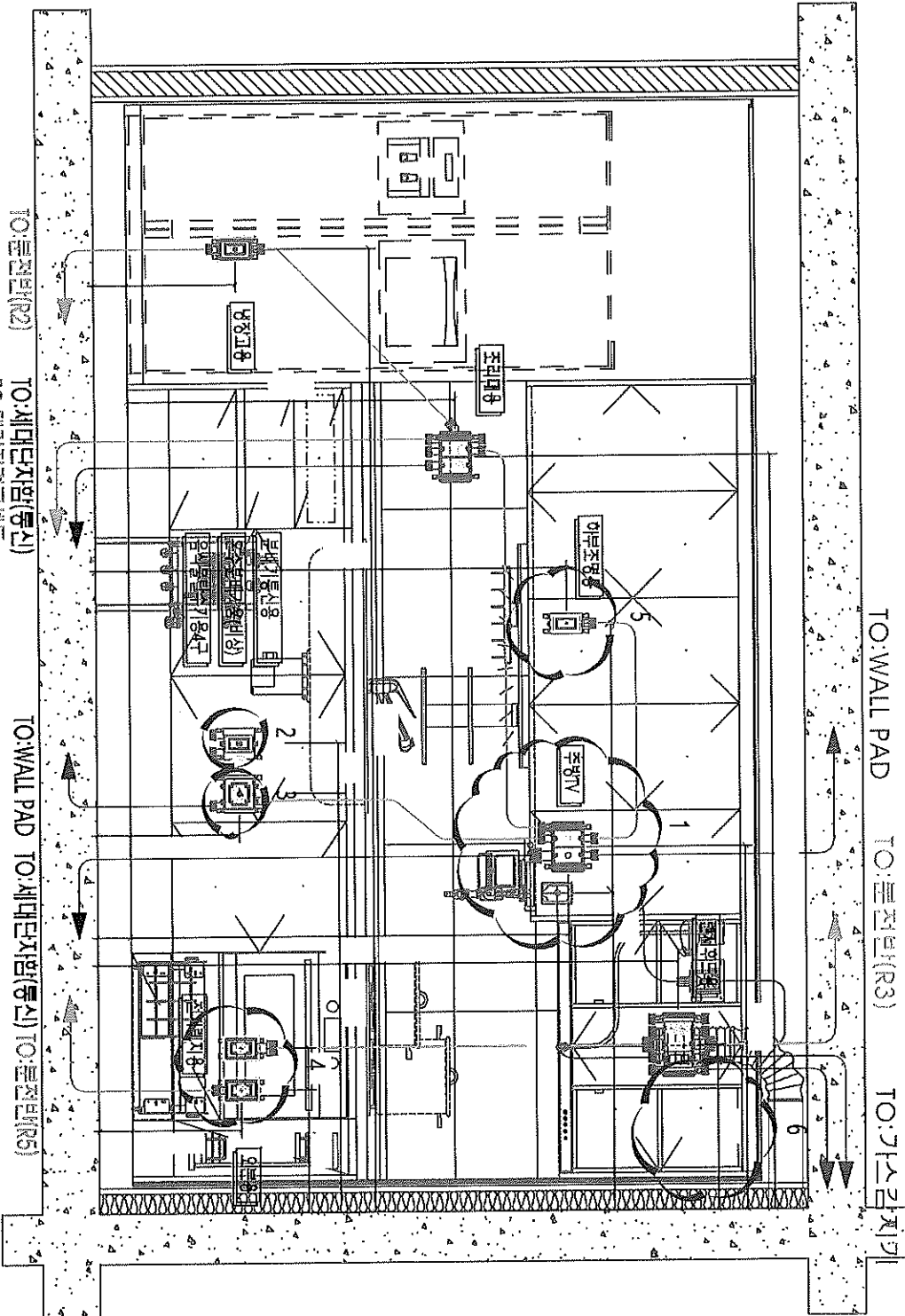


1. 선내리기, 120(W)X70(H)타공(주방TV)
2. UTP 홀타공
3. 30MM 원형 타공
4. 오븐뒤 타공 X
5. 타공 X, 선내리기
6. 그림참조



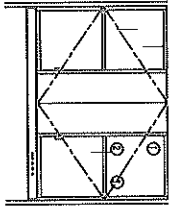
1. 전선(3기닥-흑,백,녹) 50ø 타공
2. 전선(4기닥-적,백,흑,백) 50ø 타공
3. UTP 50ø 타공



39 m² TYPE 단위세대 상세도-4

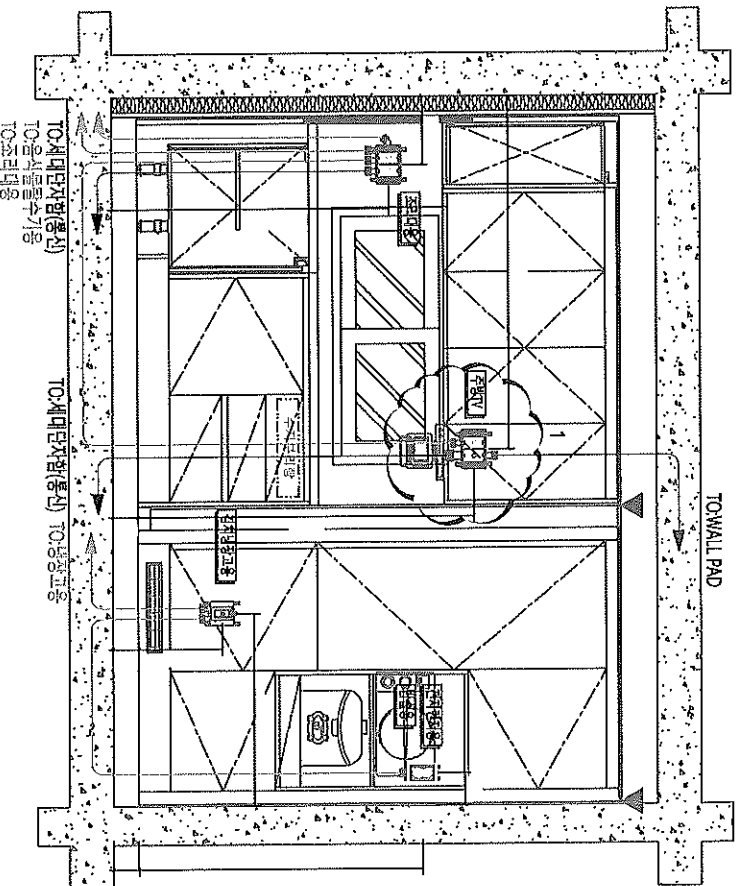
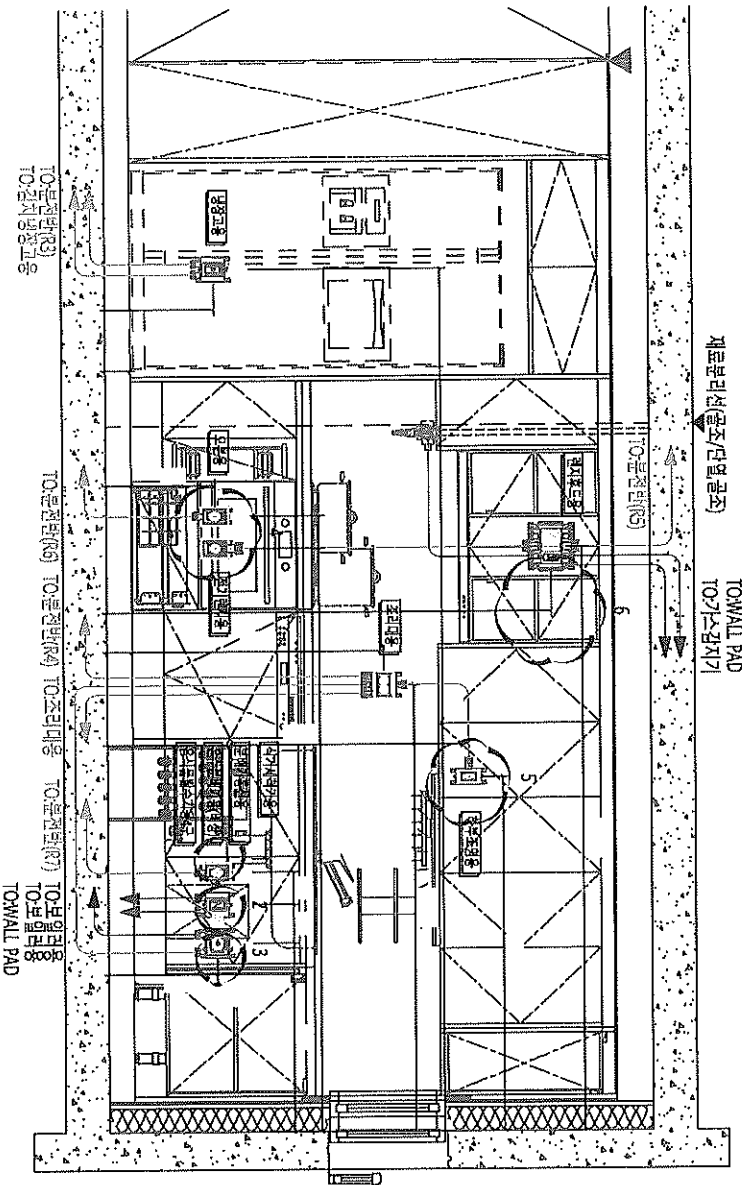
1. 30MM 원형 타공
2. UTP 홀타공
3. 30MM 원형 타공
4. 오픈타 타공 X

5. 타공 X, 선내리기
6. 그림참조



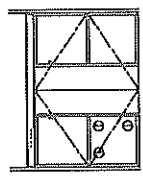
1. 전선(3기타-흑백) 50ø 타공
2. 전선(4기타-적/백/흑/백) 50ø 타공
3. UTP 50ø 타공

1. 선내리기, 120(W)X70(H)타공(주방TV)



59 m² A TYPE 단위세대 상세도-9

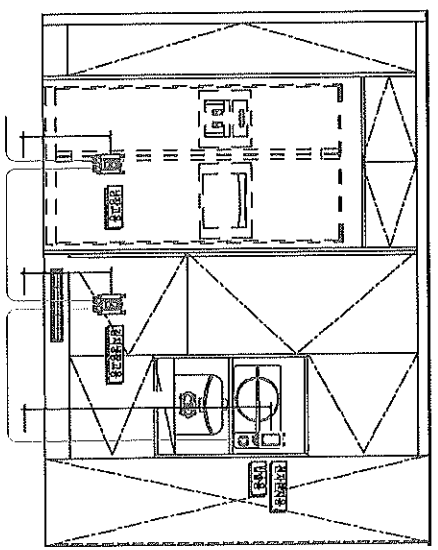
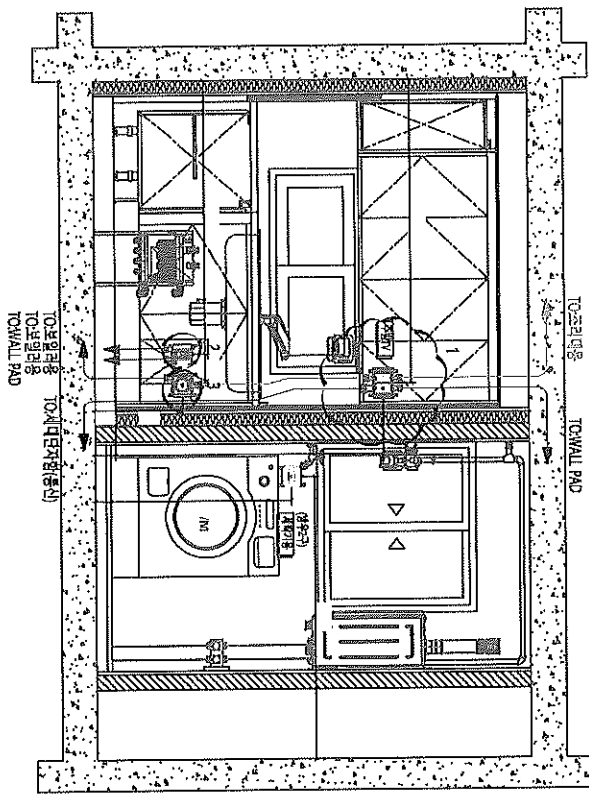
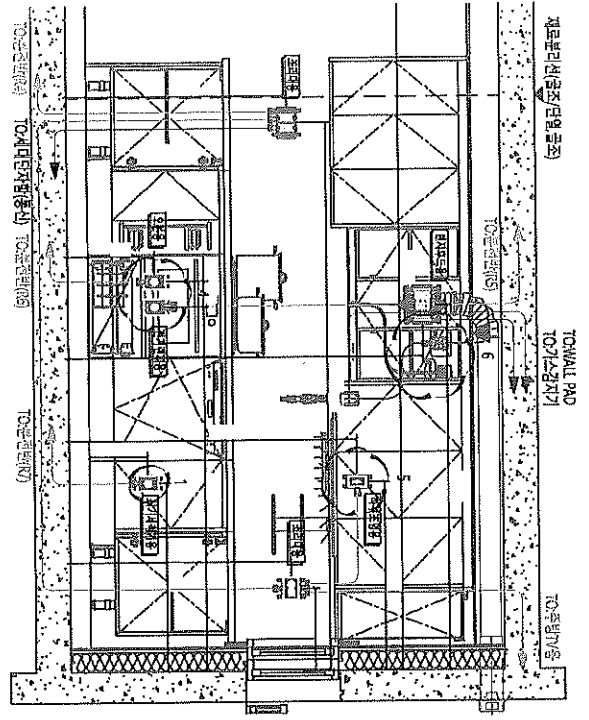
- 1. 30MM 쥘형 타공
- 4. 오븐타 타공 X



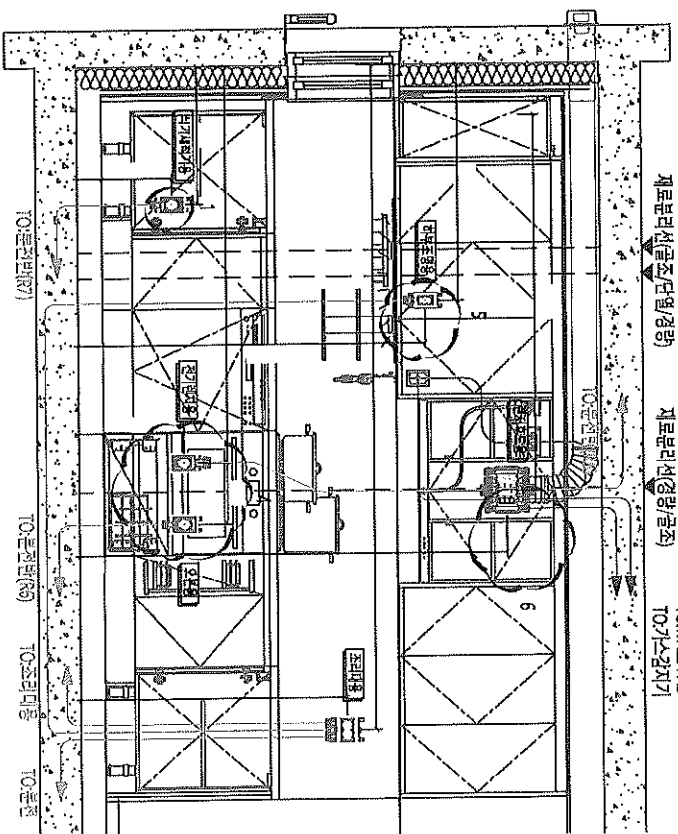
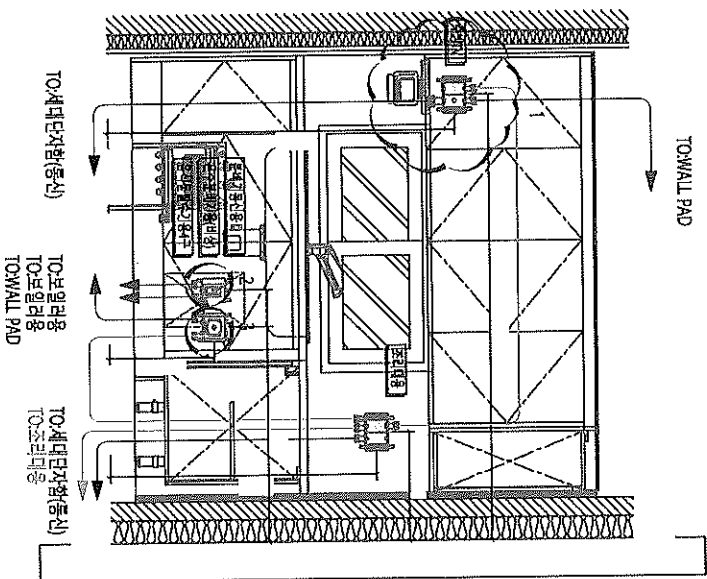
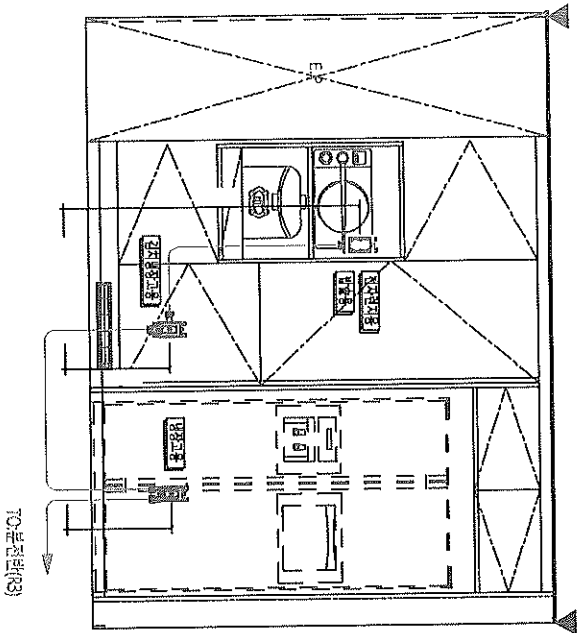
- 5. 타공 X, 선내타기
- 6. 그림자표

- 1. 전선기(무선) 벽에 50mm 타공
- 2. 전선기(무선) 벽에 50mm 타공
- 3. UP 50mm 타공

- 1. 선내타기, 120W(27인치)타공(수냉형TV)
- 2. UP 불타공
- 3. 30MM 쥘형 타공

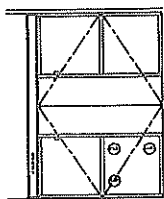


75m² A TYPE 단위세대 상세도-10



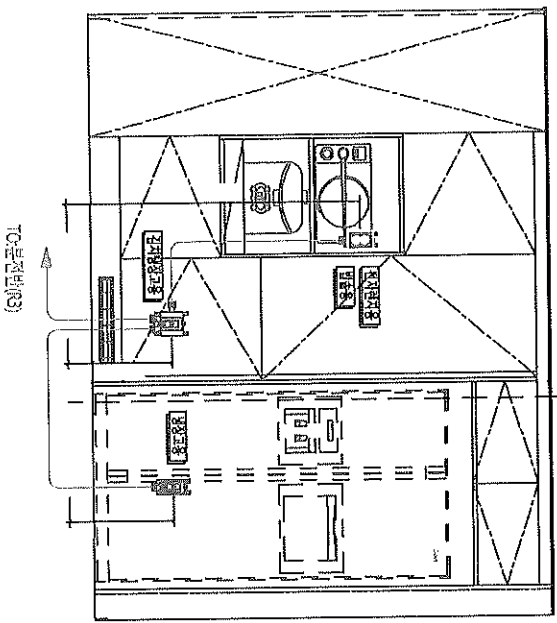
1. 선내리기 (120W)x70(바탕용(주방))
2. UTP 물터울
3. 30MM 원형 타공

1. 30MM 원형 타공
2. 타공 X, 선내리기
3. 2립철조
4. 오븐타 타공 X

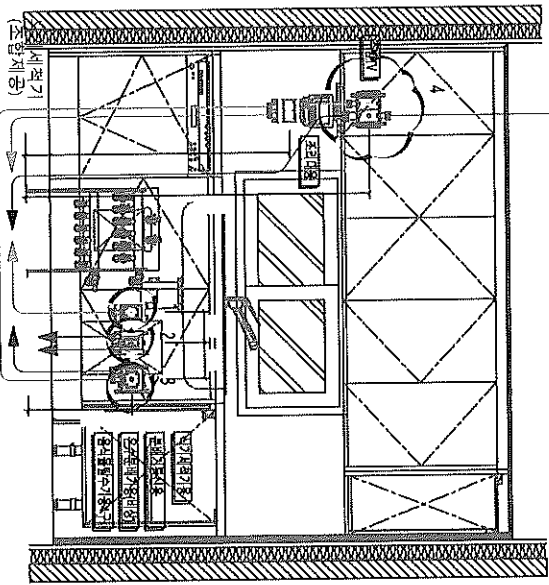


1. 권선(3기타-폭백)는 500 타공
2. 권선(2기타-폭백)는 500 타공
3. UTP 500 타공

75m²C TYPE 단위세대 상세도-11

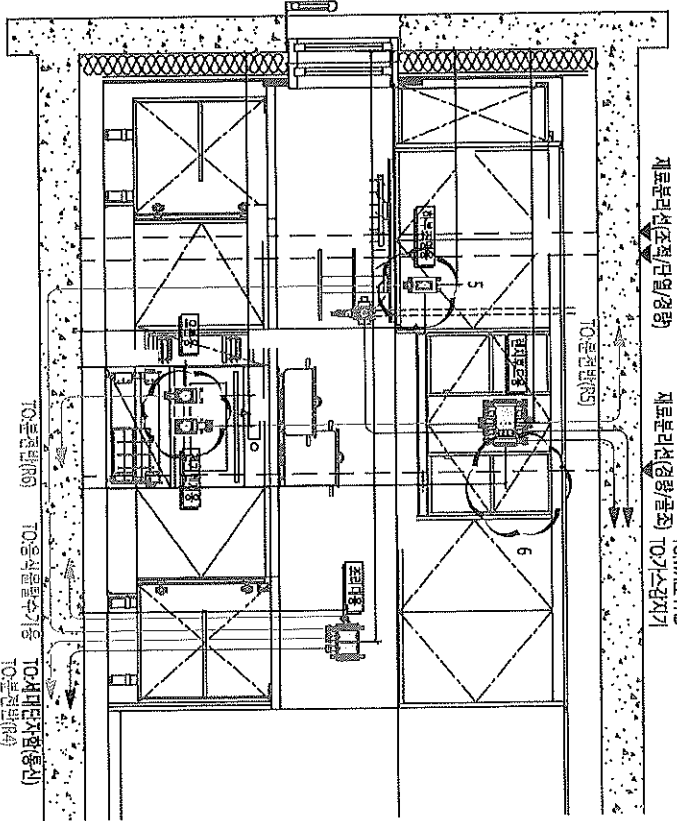


재료분리선(중좌/조좌)

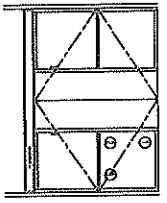


TO-보전반(83) TO-보전반(87)
TO-보일러용 TO-조리대용 TONWALL PAD

1. 30MM 일형 타공
2. UTP 홀타공
3. 30MM 일형 타공
4. 선내리기, 120MMx7000타공(주방TV)
TONWALL PAD

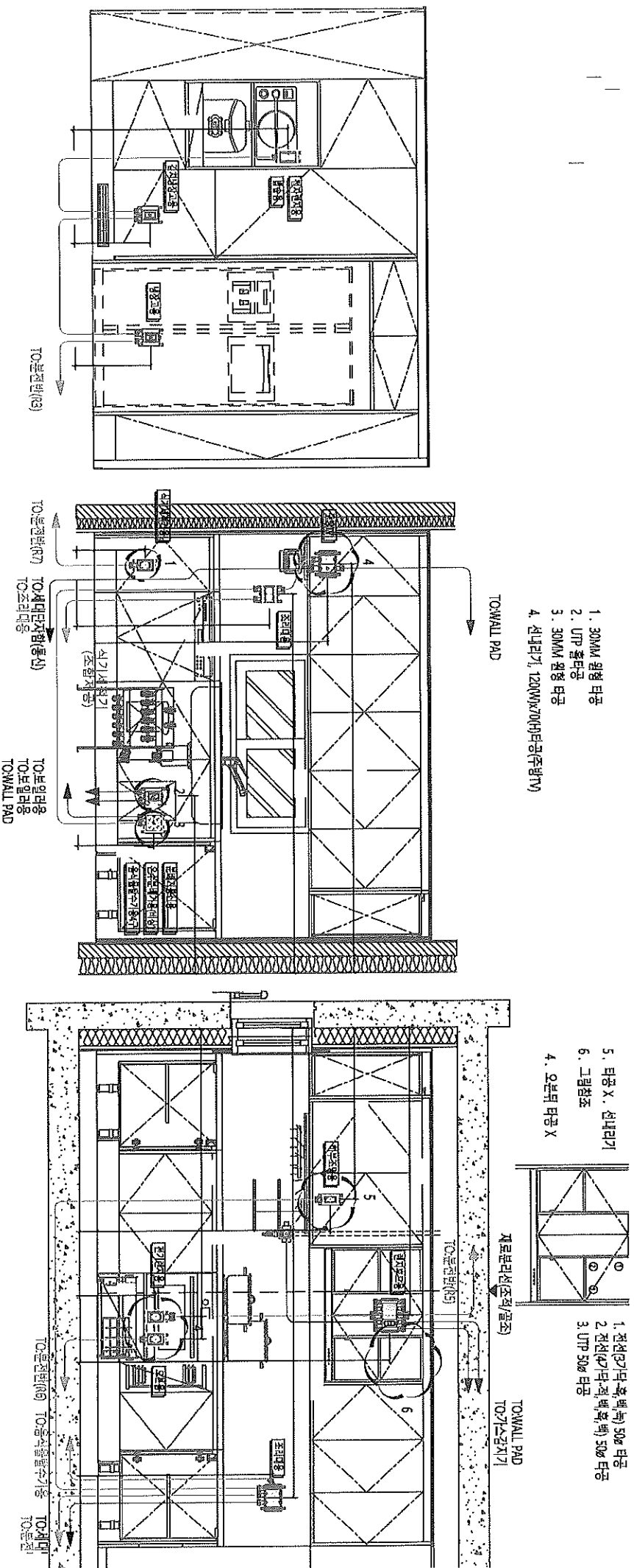


5. 타공 X, 선내리기
6. 그림참조
4. 오픈타공 X



1. 전선(가면, 纒, 纒) 50# 타공
2. 전선(가면, 纒, 纒) 50# 타공
3. UTP 50# 타공

84m²A TYPE 단위 세대 상세도-11



84m² C TYPE 단위세대 상세도-11